

ARSB Antibody (Center)
Affinity Purified Rabbit Polyclonal Antibody (Pab)
Catalog # AP7460c**Specification**

ARSB Antibody (Center) - Product Information

Application	WB,E
Primary Accession	P15848
Reactivity	Human
Host	Rabbit
Clonality	Polyclonal
Isotype	Rabbit IgG
Calculated MW	59687
Antigen Region	235-266

ARSB Antibody (Center) - Additional Information**Gene ID** 411**Other Names**

Arylsulfatase B, ASB, N-acetylgalactosamine-4-sulfatase, G4S, ARSB

Target/Specificity

This ARSB antibody is generated from rabbits immunized with a KLH conjugated synthetic peptide between 235-266 amino acids from the Central region of human ARSB.

Dilution

WB~~1:1000

E~~Use at an assay dependent concentration.

Format

Purified polyclonal antibody supplied in PBS with 0.09% (W/V) sodium azide. This antibody is purified through a protein A column, followed by peptide affinity purification.

Storage

Maintain refrigerated at 2-8°C for up to 2 weeks. For long term storage store at -20°C in small aliquots to prevent freeze-thaw cycles.

Precautions

ARSB Antibody (Center) is for research use only and not for use in diagnostic or therapeutic procedures.

ARSB Antibody (Center) - Protein Information**Name** ARSB

Function Removes sulfate groups from chondroitin-4-sulfate (C4S) and regulates its degradation (PubMed:[19306108](#)). Involved in the regulation of cell adhesion, cell migration and invasion in

colonic epithelium (PubMed:[19306108](#)). In the central nervous system, is a regulator of neurite outgrowth and neuronal plasticity, acting through the control of sulfate glycosaminoglycans and neurocan levels (By similarity).

Cellular Location

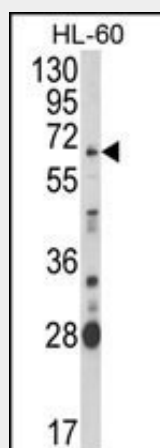
Lysosome {ECO:0000250|UniProtKB:P50429}. Cell surface {ECO:0000250|UniProtKB:P50429}

ARSB Antibody (Center) - Protocols

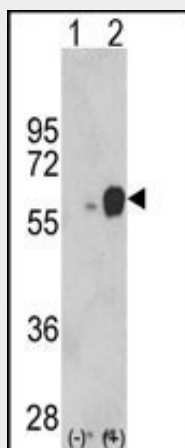
Provided below are standard protocols that you may find useful for product applications.

- [Western Blot](#)
- [Blocking Peptides](#)
- [Dot Blot](#)
- [Immunohistochemistry](#)
- [Immunofluorescence](#)
- [Immunoprecipitation](#)
- [Flow Cytometry](#)
- [Cell Culture](#)

ARSB Antibody (Center) - Images



Western blot analysis of ARSB Antibody (Center) (Cat. #AP7460c) in HL-60 cell line lysates (35ug/lane). ARSB (arrow) was detected using the purified Pab.



Western blot analysis of ARSB (arrow) using rabbit polyclonal ARSB Antibody (Center) (Cat. #AP7460c). 293 cell lysates (2 ug/lane) either nontransfected (Lane 1) or transiently transfected with the ARSB gene (Lane 2) (Origene Technologies).

ARSB Antibody (Center) - Background

ARSB belongs to the sulfatase family. The arylsulfatase B homodimer hydrolyzes sulfate groups of N-Acetyl-D-galactosamine, chondroitin sulfate, and dermatan sulfate. The protein is targetted to the lysozyme. Mucopolysaccharidosis type VI is an autosomal recessive lysosomal storage disorder resulting from a deficiency of arylsulfatase B.

ARSB Antibody (Center) - References

Peters C., Schmidt B.J. Biol. Chem. 265:3374-3381(1990)
Modaressi S., Rupp K. Biol. Chem. Hoppe-Seyler 374:327-335(1993)
Kobayashi T., Honke K. Biochim. Biophys. Acta 1159:243-247(1992)